

# MOD / NATO Disposals

ilitary vehicles and equipment for sale

[www.modsurplus.co.uk](http://www.modsurplus.co.uk)

Tel: +44 (0)1302-954007

[Return to Homepage](#) | E-Mail: [sales@modsurplus.co.uk](mailto:sales@modsurplus.co.uk)



REQUEST A QUOTE

or call us on UK +44(0)1302-954007

## Description / Ref

Caterpillar Tracked Excavator 336DL 2011 - 40242

Photo (a gallery of photos is provided below - where available)



## Details

2011 Caterpillar 336DL tracked excavator

8,824 Hours

Piped for hammer

Air Conditioning

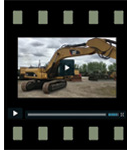
Check valves

Reverse camera

600mm pads

Machines undercarriage is excellent and overall good operating condition

Videos (if available)



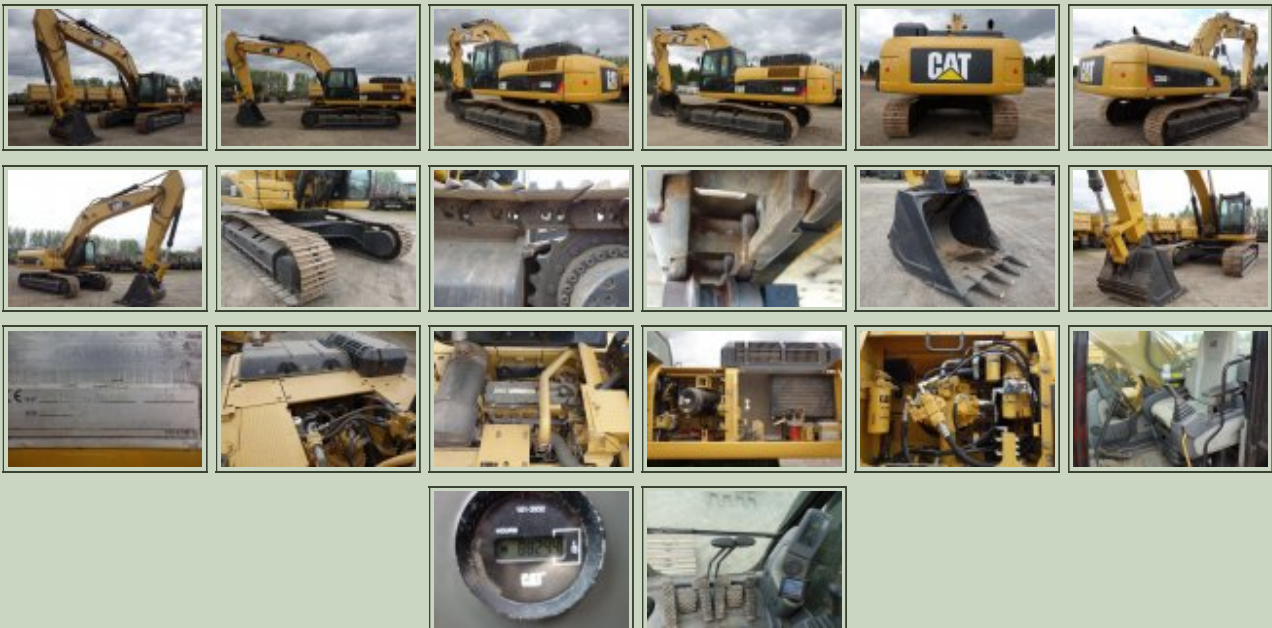
|              |                    |   |                           |
|--------------|--------------------|---|---------------------------|
| Category     | Tracked Excavators | Length                                      | 11.2 M                    |
| Manufacturer | Caterpillar        | Height                                      | 3.8 M                     |
| Engine       | C9 268 HP          | Width                                       | 3.2 M                     |
| Gearbox      |                    | GVW   | 36498 Kg                  |
| Brakes       |                    | Hrs_Kms                                     | 8824                      |
| Steering     |                    | Date into Service                           |                           |
| Tyres        |                    | Year of Manufacture                         | 2011                      |
| Max Load     |                    | Qty Available                               | 1                         |
| Electrics    | 24V                | Export Requirements <a href="#">...more</a> | NLR (No Licence Required) |



REQUEST A QUOTE

or call us on UK +44(0)1302-954007

### Photo Gallery



All prices quoted are GBP U.K. Pounds Sterling Ex. Works excluding VAT where applicable and shipping / associated costs.

Vehicles advertised are subject to remaining unsold.

All prices quoted are based on "per individual unit" purchased, any reductions on advertised price for multiple item orders is subject to negotiation and is conducted at the time of inspection or provision of LOI.

Photo's shown above may represent a vehicle type rather than an actual vehicle, vehicles are available serviced and painted to customers preference



An export licence may be required for items sold to customers outside of the U.K.  
**FOR MORE INFORMATION ON EXPORT LICENCING PROCEDURES**

**[CLICK HERE](#)**

**FOR INFORMATION ON CURRENT EU EMBARGOES**

**[CLICK HERE](#)**