

MOD / NATO Disposals

ilitary vehicles and equipment for sale

www.modsurplus.co.uk

Tel: +44 (0)1302-954007

[Return to Homepage](#) | E-Mail: sales@modsurplus.co.uk



REQUEST A QUOTE

or call us on UK +44(0)1302-954007

Description / Ref

Volvo 4200 Loader - 50176

Photo (a gallery of photos is provided below - where available)



Details

Volvo 4200 loader
 Direct from military stock in good operating condition
 Quick hitch
 Supplied with side shift forks and bucket

Videos (if available)

Category	Wheeled Loaders	Length	6.5 M
Manufacturer	Volvo	Height	2.7 M
Engine	4 cylinder	Width	2 M

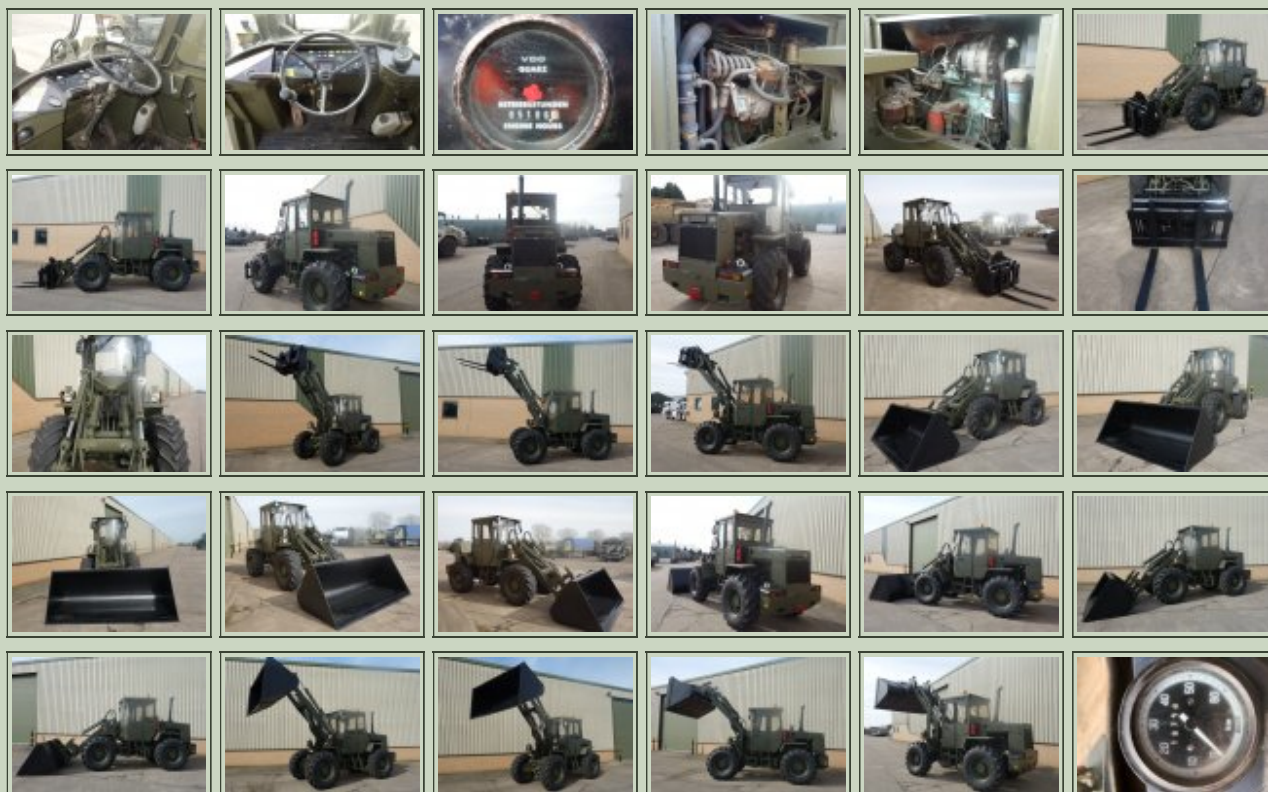
Gearbox	3 speed	GVW	
Brakes		Hrs_Kms	5107
Steering		Date into Service	
Tyres	14.9/13-24	Year of Manufacture	
Max Load		Qty Available	1
Electrics	24V	Export Requirements ...more	SIEL Licence Required



REQUEST A QUOTE

or call us on UK +44(0)1302-954007

Photo Gallery



All prices quoted are GBP U.K. Pounds Sterling Ex. Works excluding VAT where applicable and shipping / associated costs.

Vehicles advertised are subject to remaining unsold.

All prices quoted are based on **"per individual unit"** purchased, any reductions on advertised price for multiple item orders is subject to negotiation and is conducted at the time of inspection or provision of LOI.

Photo's shown above may represent a vehicle type rather than an actual vehicle, vehicles are available serviced and painted to customers preference

An export licence may be required for items sold to customers outside of the U.K.

FOR MORE INFORMATION ON EXPORT LICENCING PROCEDURES

[CLICK HERE](#)

FOR INFORMATION ON CURRENT EU EMBARGOES

[CLICK HERE](#)